

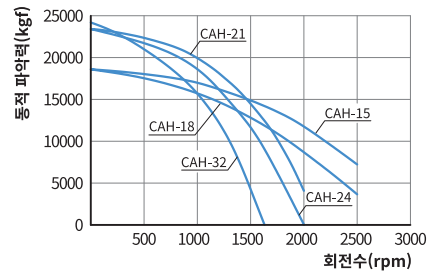
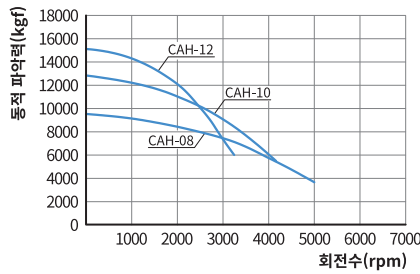
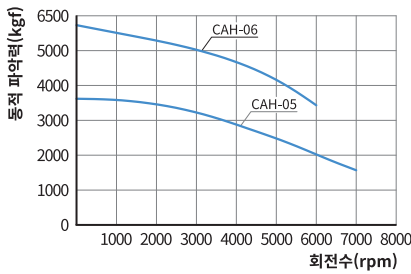
CAH

고속중공형 파워척
BIG BORE POWER CHUCK
高速中空型パワーチャック / 大通孔動力卡盘



- 높은 파악력 • 고속화 실현 • 경량화 실현 • 내구성 확보
- High Gripping Force • High Speed • Light Weight • Durability
- 高い把握力 • 高速化実現 • 軽量化実現 • 耐久性確保
- 夾緊力強. • 速度快 • 重量轻 • 耐磨損

Dynamic Gripping Force/动夹紧力/動的把握力グラフ/동적파악력 선도



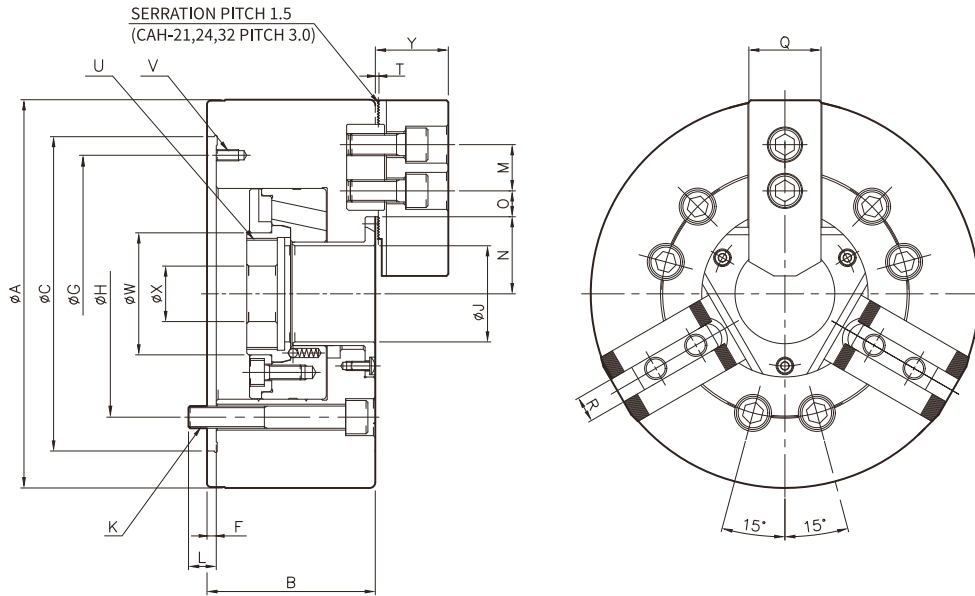
※ 척의 오랜 수명을 유지하기 위해 최소 일2회 이상 그리스를 주입하여 주십시오.
※ It is recommended to grease chucks at least twice a day in order to maximize longevity.

Specifications/规格/仕様表/ 사양표

Spec.사양 Model형식	Order NO. 오더번호	Spindle nose NO. 주축규격	Thru-hole (Diameter) 관통경(직경) mm	Jaw stroke (Diameter) 쇼 스트로크(직경) mm	Plunger stroke 플런저 스트로크 mm	Gripping Dia(External gripping) 파악경(외경파악)mm		Max. permissible input force 허용 실린더력 KN(kgf)
						Max 최대	Min 최소	
CAH-05	1AH05	-	33	5.4	10	135	10	17.5(1784)
CAH-06	1AH06	A2-5	46	5.5	13	169	13	25(2500)
CAH-08	1AH08	A2-6	52	7.6	18	210	11	40(4080)
CAH-10	1AH10	A2-8	77	8.5	20	254	31	50(5100)
CAH-12	1AH12	A2-8	91	10.2	24	304	34	58(5916)
CAH-15	1AH15	A2-11	118	10.6	23	381	30	71(7240)
CAH-18	1AH18	A2-11	118	10.6	23	450	30	71(7240)
CAH-21	1AH21	A2-11, 15	140	10.6	23	530	87	90(9177)
CAH-24	1AH24	A2-11, 15	165	10.4	23	610	110	90(9177)
CAH-32	1AH32	A2-15, 20	240	18	34	800	152	100(10193)

Spec.사양 Model형식	Max. static gripping force 최대 정적파악력 KN(kgf)	Max.permissible speed 최고 사용회전수 r.p.m(min ⁻¹)	Weight (With standard soft jaws) 중량(표준소프트 죠 포함) kg	GD ² Moment of inertia N·m ² (kgf·m ²)	Matching cylinder 적용실린더	Matching hard jaw 적용하드쥬	Matching soft jaw 적용소프트쥬
CAH-05	36(3671)	7000	6.7	0.7(0.071)	YSH·YAH-05	HJ-04A1	SJ-05T1
CAH-06	63(6426)	6000	12.5	2.26(0.23)	YSH·YAH-06	HJ-06T1	SJ-06T1
CAH-08	94(9597)	5000	22.3	6.67(0.68)	YSH·YAH-08	HJ-08T1	SJ-08T1
CAH-10	125(12740)	4200	34.5	12.84(1.31)	YSH·YAH-10	HJ-10T1	SJ-10T1
CAH-12	147(15000)	3300	55.3	28.71(2.93)	YSH·YAH-12	HJ-12A1	SJ-12A1
CAH-15	180(18355)	2500	120	89.14(9.09)	YSH-15	HJ-15T1	SJ-15A1
CAH-18	180(18355)	2000	164	174.6(17.8)	YSH-15	HJ-15T1	SJ-15A1
CAH-21	234(23861)	1700	235	351.1(35.8)	YSH-15	HJ-21B1	SJ-21A1
CAH-24	234(23861)	1400	293	651.2(66.4)	YSH-15	HJ-21B1	SJ-21A1
CAH-32	240(24464)	1200	530	598.4(61)	YSH-21	-	-

Outward Drawing / 外型图 / 外刑图 / 외형도



Dimension / 尺寸 / 寸法表 / 치수표

Item 항목 Model 형식	A	B	C	F	G	H	J	K	L	M	N max	N min
CAH-05	135	60	110	4	96	82.6	33	3-M10	15	14	26.5	23.8
CAH-06	169	80	140	5	116	104.8	46	6-M10	12	20	33.5	30.7
CAH-08	210	91	170	5	150	133.4	52	6-M12	15	25	41.7	37.9
CAH-10	254	100	220	5	190	171.4	77	6-M16	17	30	54.5	50.3
CAH-12	304	115	220	6	190	171.4	91	6-M16	18	30	67.4	62.3
CAH-15	381	133	300	6	260	235	118	6-M20	30	43	82	76.7
CAH-18	450	133	380	6	320	235	118	6-M20	30	43	82	76.7
CAH-21	530	140	380	6	330.2	330.2	140	6-M22	34	60	98.5	93.2
CAH-24	610	149	380	6	330.2	330.2	165	6-M22	32	60	108.4	103.2
CAH-32	800	150	520	6	463.6	463.6	240	6-M24	31	38	153.5	144.5

Item 항목 Model 형식	O max	O min	P max	P min	Q	R	S	T	U max	V	W	X	Y	Z
CAH-05	19.75	7.75	1	-9	23	10	20	2	M40X1.5	3-M6	45	20	26	54
CAH-06	23	10	12	-1	31	12	19	2	M55X2.0	3-M6	60	20	33	72
CAH-08	27	10	16.5	-1.5	39	14	20.5	2	M60X2.0	3-M6	66	30	39	95
CAH-10	31	12	9.5	-10.5	44	16	27	2	M85X2.0	3-M8	94	30	46	110
CAH-12	42	12	10	-14	50	21	28	2.5	M100X2.0	3-M8	108	30	51.8	111
CAH-15	43.8	18.3	11	-12	62	22	39	5	M130X2.0	3-M10	139	60	70	165
CAH-18	73.8	18.3	11	-12	62	22	39	5	M130X2.0	3-M10	139	60	70	165
CAH-21	87.5	21.5	11	-12	65	25	39	5	M155X3.0	3-M12	170	80	73	180
CAH-24	117.5	21.5	20	-3	65	25	40	5	M175X3.0	3-M12	187	80	73	180
CAH-32	190.6	19.5	29	-5	75	25.5	40	10.4	M250X3.0	3-M12	260	80	83.6	160

※ 치수 및 사양은 예고없이 변경될 수 있습니다.
 ※ Specifications are subject to change without notice.

Model Description / 型号说明 / 型式番号表示 / 형식번호 표시

CAH □ - □□
 Chuck Size
 Blank | Standard
 A | adapter type
 T | 2-jaw type

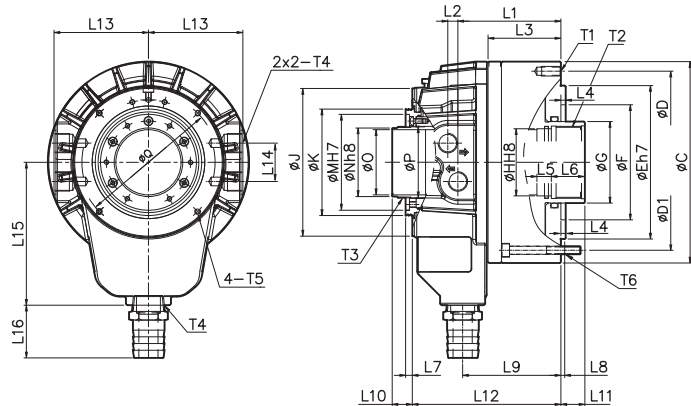
CGH □ - □□
 Chuck Size
 Blank | Standard
 A | adapter type
 T | 2-jaw type

CAS □ - □□ **A** □
 Chuck Size Spindle Nose
 Blank | Standard
 A | adapter type
 T | 2-jaw type
 D | Direct mount type

YSHL

초고속 중공슬림형 실린더(롱스트로크)

SUPER HIGH SPEED BIG BORE HYDRAULIC(Long Stroke)
超高速中空スリム型シリンダー / 超大通孔油缸



- 호환성 실현 • 소형화 경량화 • 안전 확보 • 누유방지 설계(특허등록:0172805) • 동급 최대 추력
- Compatibility • Small Size & Light Weight • Safety Guaranteed • Leakage Prevention Design • Highest Draw Pull
- 互換性實現 • 小型化, 輕量化 • 安全確保 • 漏油防止設計(特許登録) • 同クラス最大推力
- 实现兼容性 • 体积小, 重量轻 • 保障安全 • 防泄漏设计(专利注册:0172805) • 动力强大

※ 하용 최고 회전속도는 실측치에 준함.
※ Maximum turning speed is based on actual measurement.

Specifications/规格/仕様表/ 사양표

Spec.사양 Model형식	Order NO. 오더번호	Cylinder Dia 실린더내경 mm	Piston stroke 피스톤스트로크 mm	Thru hole Dia 실린더관통경 mm	Piston surface area 피스톤 단면적 cm ²		Max. Draw bar pull 실린더 추력 KN(kgf)	
					Push 압축	Pull 인축	Push 압축	Pull 인축
YSHL-15	2SHL15	250	50	117.5	364.4	331.8	129.8(13233)	118.2(12050)
YSHL-21	2SHL21	280	51	166.5	372.1	327.1	111.5(11376)	98(10002)
YSHL-32	2SHL32	390	51	240	683	643	101.4(10245)	95.4(9645)

Spec.사양 Model형식	Max. operating pressure 최고사용유압력 kgf/cm ²	Max. permissible speed 최고사용회전수 r.p.m.(min ⁻¹)	Total leakage 총드레인량 ℓ/min	Weight 중량 kg	GD ² Moment of inertia N·m ² (kgf·m ²)	Matching chuck 적용척
YSHL-15	40.8	3000	7	52	18.6(1.9)	CAH-15, 18, 24
YSHL-21	33.6	2000	8.4	77	29.43(3)	CAH-21, 24
YSHL-32	25	1500	18	135	39.2(4)	CAH-32

Dimension/尺寸/寸法表/치수표

Item항목 Model형식	C	D	D1	E	F	G	H	J	K	M	N	O	P	Q
YSHL-15	307	275	275	230	170	140	123	216	167	152	122	117.5	175	256
YSHL-21	354	290	345	260	240	190	170	278	217	205	170.5	166.5	175	256
YSHL-32	454	420	-	320	280	265	243	358	297	285	250.5	240	255	330

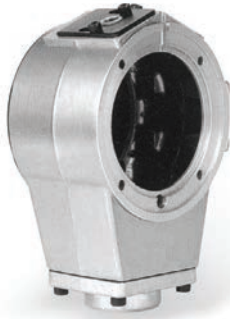
Item항목 Model형식	L1	L2	L3	L4	L5	L6	L7	L8	L9	L10 max	L10 min	L11 max	L11 min
YSHL-15	168.5	18.5	129	6	20	45	9.85	6	190	76	26	46	-4
YSHL-21	182.5	18.5	139	7	20	45	9.85	5	200	76.3	25.3	51	0
YSHL-32	186	18.5	138	5	20	45	9.85	5	213	76	25	50	-1

Item항목 Model형식	L12	L13	L14	L15	L16	T1	T2	T3	T4	T5	T6
YSHL-15	241	140	40	215	50	12-M16X32	M124XP2.0	M111XP2.0	PT-1/2	4-M6X10	8-M12X140
YSHL-21	259.5	172.6	40	255	55	12-M16X32	M180XP3.0	M173XP2.0	PT-1/2	4-M6X10	12-M12X150
YSHL-32	277	214	40	332	58	12-M16X40	M250XP3.0	M253XP2.0	PT-1/2	6-M6X15	-

※ 치수 및 사양은 예고없이 변경될 수 있습니다.
※ Specifications are subject to change without notice.

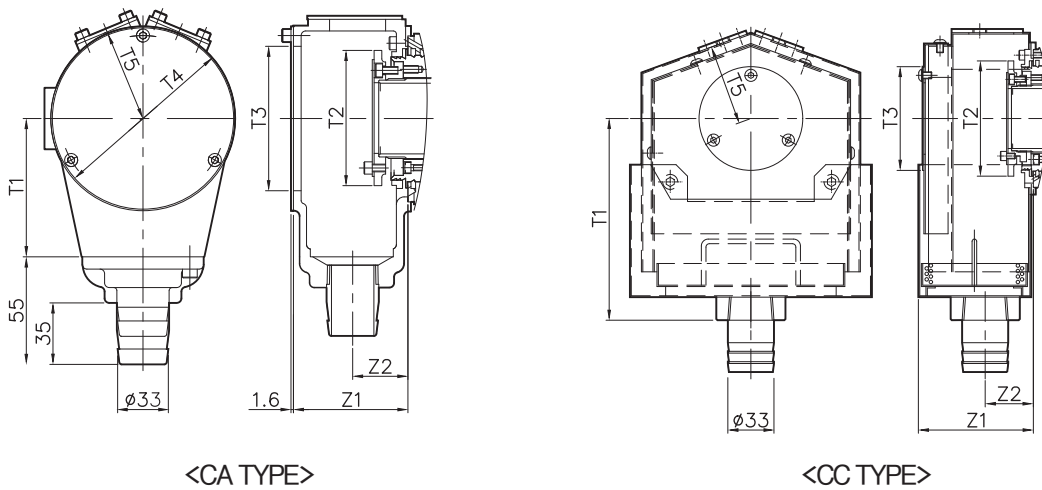
CA

쿨란트 콜렉터 COOLANT COLLECTOR クーラントコレクター / 冷却液收集器



- 절삭유 회수 · 실린더 작동유무 확인
- Coolant Collection · Checking Cylinder operation
- 切削油回収 · シリンダー作動有無確認
- 收集冷却液 · 检测回转油缸的运行

Outward Drawing / 外型图 / 外形图 / 외형도



Dimension / 尺寸 / 寸法表 / 치수표

Model명식 / Item항목	T1	T2	T3	T4	T5	Z1	Z2	Matching Cylinder / 적용실린더
CA-06	90	φ 88	φ 94	φ 121	61	74.5	36.5	YSH/YAH-06
CA-08	100	φ 100	φ 106	φ 132	67	79.5	36.5	YSH/YAH-08
CA-10	126	φ 125	φ 132	φ 158	80	84.5	37	YSH/YAH-10
CA-12	142	φ 143	φ 154	φ 180	95	88	37	YSH/YAH-12
CSG-08	142	φ 143	φ 154	φ 177	92.5	88	37	YSGH-08
CG-10	142	φ 133	φ 154	φ 177	92.5	88	37	YGH-10
CS-15	190	φ 185	φ 186	φ 210	117.5	102	35	YSH-15

Model명식 / Item항목	T1	T2	T3	T4	T5	Z1	Z2	Matching Cylinder / 적용실린더
CC-06	155	φ 88	φ 90	-	65	92.3	34.3	YAH-06
CC-08	155	φ 100	φ 90	-	70	99.8	41.8	YAH-08
CC-10	200	φ 125	φ 150	-	100	146.8	61.8	YAH-10
CC-12	200	φ 143	φ 150	-	100	146.8	61.8	YAH-12
CC-08	155	φ 143	φ 125	-	97.7	97.3	39.3	YSGH-08
CC-12	200	φ 165	φ 125	-	102	152.3	67.3	YGH-10
CC-15	190	φ 185	φ 150	-	117	142.8	64.5	YSHL-15
CC-21	235	φ 248	φ 205	-	133.1	142.8	64.5	YSHL-21
CC-32	285	φ 328	φ 305	-	169.7	132.8	55	YSHL-32

※ 치수 및 사양은 예고없이 변경될 수 있습니다.
 ※ Specifications are subject to change without notice.

Model Description / 型号说明 / 型式番号表示 / 형식번호 표시

CA -
 Cylinder Size

CC -
 Cylinder Size